

L(P)GZ/L(P)GZ-F

系列全自动刮刀下卸料离心机

L(P)GZ/L(P)GZ-F Automatic Centrifuge



L(P)GZ系列全自动刮刀下卸料离心机
L(P)GZ Automatic Centrifuge



适用于无菌粉生产
Suitable To Antiseptis
Production

L(P)GZ-F系列全自动刮刀下卸料离心机
L(P)GZ-F Automatic Centrifuge

● 标准结构形式

平台结构，外壳与底板焊接为一体，壳盖与壳体采用法兰配合，快开结构，壳盖的开启采用液压驱动，壳盖上设置加料管，清洗管，视镜，观察灯，刮刀装置，人孔等，外部连接管口均采用标准法兰。

● 主要材料

平板为Q235包衬不锈钢，转鼓除兰底铸钢衬包不锈钢外其余全部采用不锈钢，壳体壳盖(含其附属品)全部采用不锈钢，轴座采用铸钢或铸铁外包不锈钢。

● 标准配置

PLC+变频控制，能耗制动，料位探测(接触式)，立式普通(或防爆)电机，普通传动三角皮带及安全罩，电机封闭罩，现场操作箱，隔尔固阻尼型减震器。

● 结构选择

- 1.壳体与平板采用法兰联接，快速锁紧结构并配有可靠密封。
- 2.转鼓采用全不锈钢切削型。
- 3.开设排气口等其他要求。

● 参数选择

可按客户的工艺需要提供不同参数的产品。

- 1.装料容积(装料限量)
- 2.转鼓转速(最大分离因素)

● Standard Structure Form

It adopts platform structure, with out housing welded with chassis. Adopting quick open structure, shell cover is fixed to shell body with flange. Hydraulic pressure is applied to open the lid. Shell cover is equipped with feeding pipe, washing pipe, sight glass, viewing-light, scraper device, and man hole and so on. Standard flanges are applied for the joints connected to external pipe.

● Main Material

Flat plate adopts Q235 covered with stainless steel. Revolving drum also adopts stainless steel except the bottom drum adopts cast steel covered with stainless steel. Shell body and lid (including attached facilities) both adopt stainless steel. Bearing seat adopts cast steel or cast iron covered with stainless steel.

● Standard Configuration

PLC plus Frequency conversion, dynamic braking, product level detection (contact type), vertical common motor (or explosive proof type), common transmission v-belt and safe cover motor enclosed cover, spct operation box and GERB damping shock absorber.

● Structure Choice

- 1.Shell body is connected with flat plate by flange and fast lock structure and dependable seal are adopted.
- 2.Drum adopts carving stainless steel.
- 3.Gas outlet or other requirements can be met.

● Parametric Choice

Products with various parameters are available to different customers according to the their technical demand.

- 1.Loading capacity (Maximum capacity)
- 2.Revolving speed (Maximum separating factors)

L(P)GZ/L(P)GZ-F

系列全自动刮刀下卸料离心机

L(P)GZ/L(P)GZ-F Automatic Centrifuge

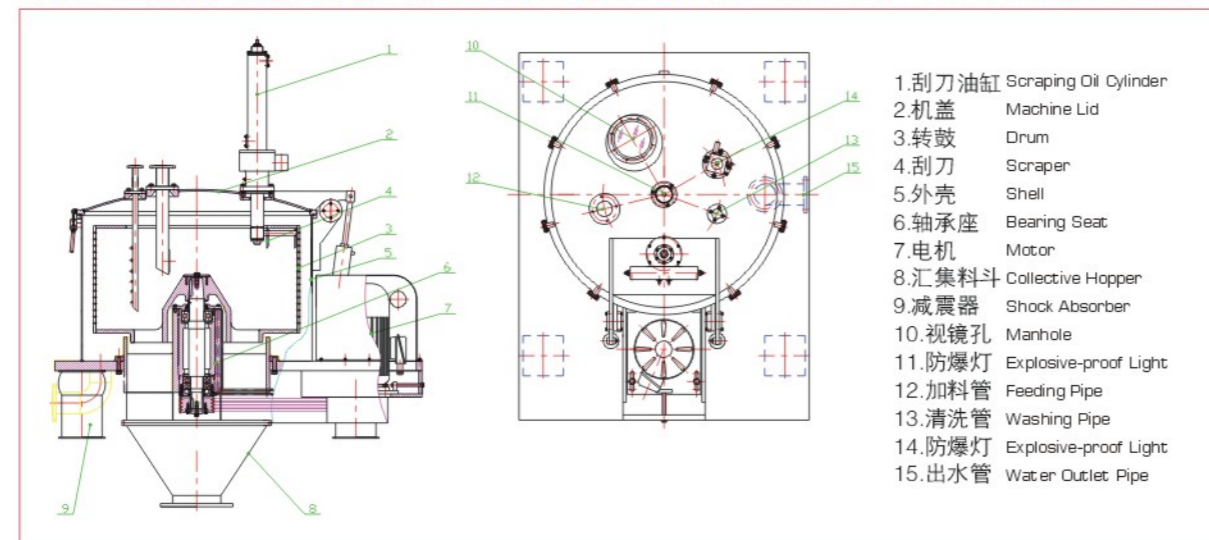
● 配置选择

1. 恒扭矩普通(防爆)电机, 防静电(或其他型式)传动皮带。
2. 反馈制动, 液晶触摸屏。
3. 振动保护, 充氮保护, 转速显示。
4. 含氧测定或充氮控制。
5. 开盖连锁保护。
6. 出液口液封式气液分离。
7. 在线清洗结构, 高压气体反吹系统。
8. 非接触式料位探测。
9. 斜斗式异步布料器。
10. 其他配置要求。
11. 残余滤饼自动清除装置(获国家专利)。

● L(P)GZ/L(P)GZ-F系列无菌离心机的主要特点

1. 大翻盖或全翻壳结构, 方便清洗和维护;
2. 全密闭结构, 机器内腔、轴承座、刮刀腔充氮气保护;
3. 抛光精度高, 表面粗糙度可达Ra0.2~0.4 μm;
4. 结构设计简洁, 焊缝圆滑过渡, 易清洗;
5. 主轴密封可靠并设置检测装置, 确保无泄漏;
6. CIP在线清洗装置布置合理, 可对离心机内部进行有效清洗, 无清洗死角;
7. 可对机器内部进行高温消毒;
8. 采用变频控制系统、能耗或回馈制动方式;
9. 传动机构设置全密闭罩壳, 防止传动过程中的粉尘污染;

L(P)GZ立式刮刀下卸料离心机示意图 Structural Diagram of L(P)GZ Vertical Scraper Down Discharge Centrifuge



● Configuration Choice

1. Common (explosion proof) motor of permanent torque, static electricity proof (or other types) transmission belt.
2. Dynamic braking, LCD touching screen.
3. Vibration protection, Nitrogen protection, revolving speed display.
4. Oxygen content detection or nitrogen feeding control.
5. Lid open inter lock protection.
6. Gas-liquid separation can adopt liquid seal on the liquid outlet.
7. CIP system and high pressure gas counter-pulse system.
8. Non-contact product level detection.
9. Swash plate type asynchronous distributor.
10. Other requirements.
11. Anchor and other demands (have owned the national patent).

● Main Feature of L(P)GZ/L(P)GZ-F Antisepsis Centrifuge

1. Adopt lid reversible structure or whole housing reversible structure, it is convenient for cleaning and maintenance.
2. Whole-sealing structure, inner machine, bearing seat, scraper are protected by nitrogen.
3. The tensity of polish is accurate, roughness of surface can reach Ra 0.2-0.4 μm.
4. Structure is simple and seam is glazed, easy to clean.
5. The sealing of the main shaft is reliable and inspecting device is equipped, which can ensure no leaking.
6. CIP device is set reasonable, it can clean the centrifuge effectively with no cleaning angle.
7. Uperization is used in the machine.
8. Adopt frequency conversion controlling system, dynamic or regenerative braking.
9. Enclosed cover is set on the transmission device to avoid powder pollution during the process of transmission.

● L(P)GZ系列离心机主要技术参数 L(P)GZ Series Centrifuge Main Parameters

项目Item	型号 Model	L(P)GZ-800	L(P)GZ-1000	L(P)GZ-1200	L(P)GZ-1250	L(P)GZ-1500	L(P)GZ-1600	L(P)GZ-1600(A)	L(P)GZ-1800	L(P)GZ-1800(A)	
转鼓直径 Drum diameter(mm)		800	1000	1000	1200	1250	1500	1600	1600	1800	
转鼓高度 Drum Height(mm)		400	420	580	500	500/630	800	700	800	1000	
转鼓容积 Drum volume(L)		100	140	190	260	310/400	505	610	800	1000	
装料限量 Loading capacity(Kg)		135	180	250	320	400/520	650	820	1000	1200	
最高转速 Max. Speed (r/min)		1500	1080	1200	970	1000	1000	850	850	800	
最大分离因素 Maximum separating factor		1007	652	805	631	698	698	605	646	645	
电机功率 Motor power (Kw)		7.5	15	15	18.5	18.5	22	30	37	45	
外形尺寸(含减震器) Size (including shock absorber)(mm)		1700 x1400 x1800	1968 x1500 x1900	1968 x1500 x2100	2280 x1800 x1977	2280 x1800 x2354	2280 x1800 x2563	2600 x2140 x2800	3000 x2400 x3210	3000 x2400 x3100	3260 x2300 x3200
机器重量 Weight(Kg)		2000	3500	3800	4350	5000/5600	6000	10800	12500	12800	14450

随着科技的进步, 我们保留更改的权利 All right is reserved for amendment with improvement of technology

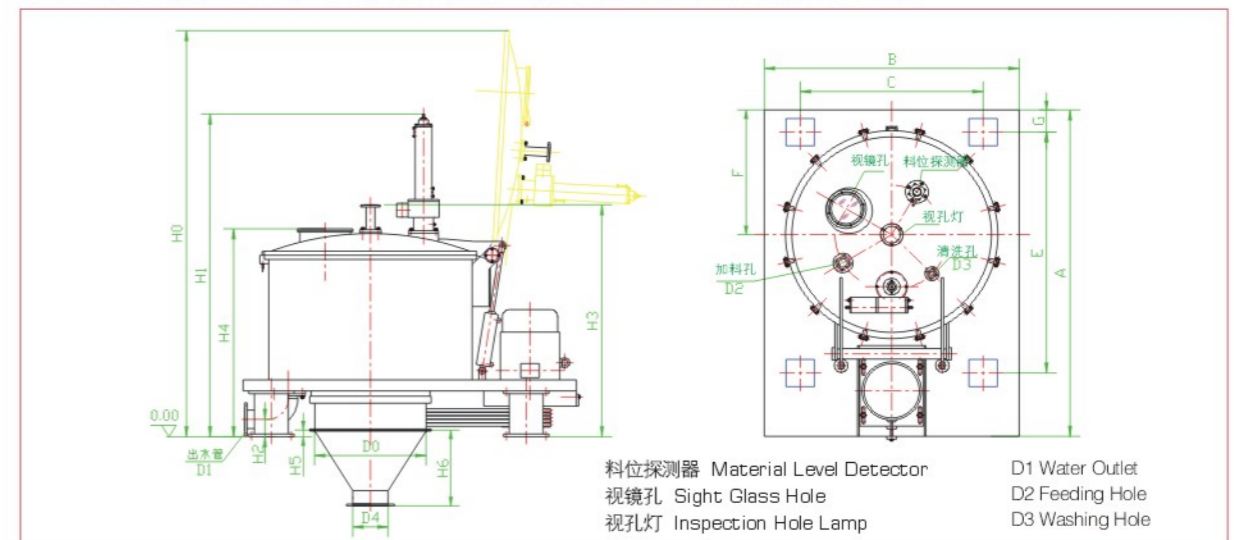
● L(P)GZ-F系列离心机主要技术参数 L(P)GZ-F Series Centrifuge Main Parameters

项目Item	型号 Model	L(P)GZ-F-800	L(P)GZ-F-1000	L(P)GZ-F-1200	L(P)GZ-F-1250
转鼓直径 Drum diameter(mm)		800	1000	1200	1250
转鼓高度 Drum Height(mm)		400	420	500	500
转鼓容积 Drum volume(L)		100	140	260	313
装料限量 Loading capacity(Kg)		135	180	320	400
最高转速 Max. Speed (r/min)		1500	1080	970	1000
最大分离因素 Maximum separating factor		1007	652	631	698
电机功率 Motor power (Kw)		7.5	15	18.5	18.5
外形尺寸(含减震器) Size (including shock absorber)(mm)		2000x1400x1330	2480x1500x1280	2558x1800x1445	2658x1800x1550
机器重量 Weight(Kg)		3100	4730	5700	6200

随着科技的进步, 我们保留更改的权利 All right is reserved for amendment with improvement of technology

● L(P)GZ立式刮刀下卸料离心机外形及配管图

Outline Drawing And Tubing View of L(P)GZ Vertical Scraper Down Discharge Centrifuge



L(P)GZ/L(P)GZ-F

系列全自动刮刀下卸料离心机

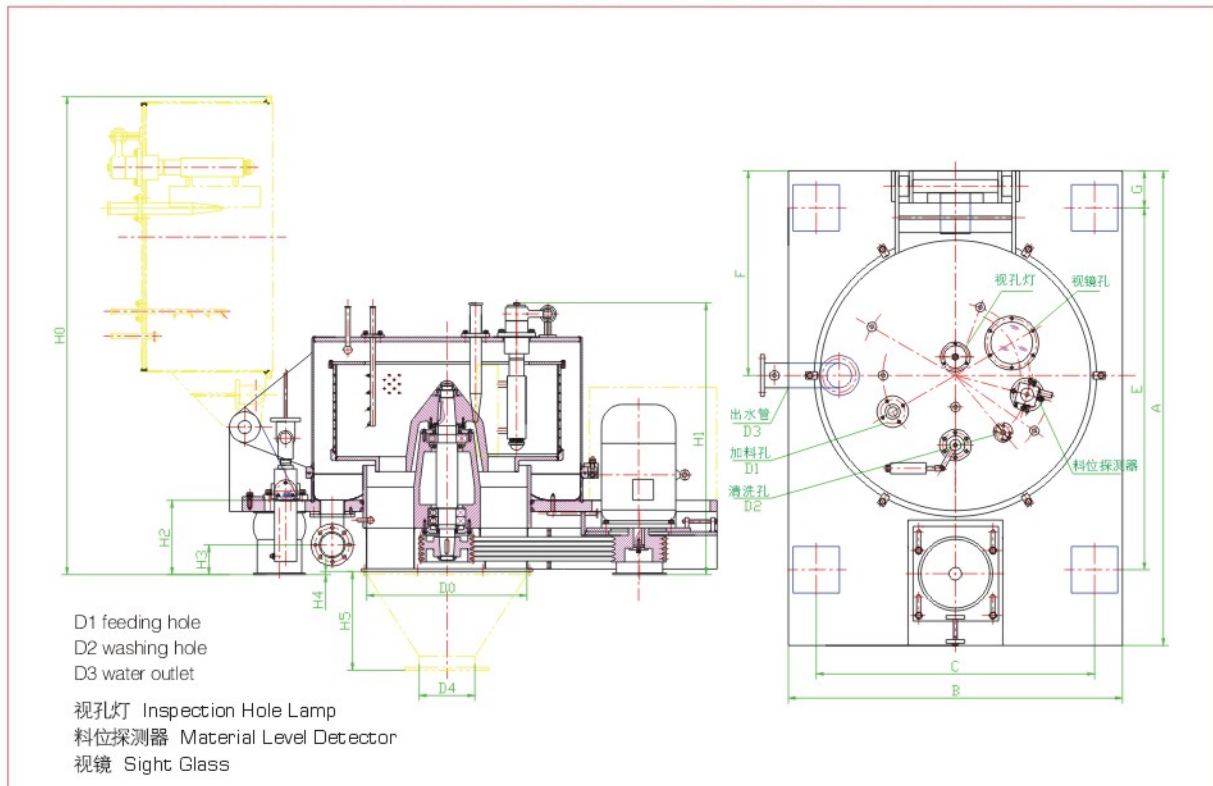
L(P)GZ/L(P)GZ-F Automatic Centrifuge

● L(P)GZ立式刮刀下卸料离心机外形及配管图 Figure tubing of L(P)GZ Vertical Scraper Down Discharging Centrifuge

代号Code 型号Model	A	B	C	E	F	G	H0	H1	H2	H3	H4	H5	H6	D0	D1	D2	D3	D4
L(P)GZ800	1700	1400	1000	1230	700	170	2280	1800	180	1293	1043	100	350	640	DN80	DN50	DN20	200
L(P)GZ1000	1968	1500	1100	1500	760	180	2380	2100	146	1325	1175	55	500	800	DN100	DN50	DN20	250
L(P)GZ1200	2280	1800	1500	1700	880	180	2912	1977	220	1463	1313	16	500	905	DN125	DN50	DN20	300
L(P)GZ1250	2280	1800	1500	1700	880	180	2922	2354	220	1573	1423	16	500	905	DN125	DN50	DN20	300
L(P)GZ1500	2600	2140	1700	1800	1070	220	3500	2563	360	1770	1620	50	600	1080	DN150	DN65	DN25	350
L(P)GZ1600	3000	2400	1900	2300	1300	250	3761	2811	360	2020	1870	70	600	1270	DN150	DN65	DN25	350
L(P)GZ1800	3230	2630	1900	2140	1340	253	/	2895	745	2127	1927	80	650	1200	DN250	DN80	DN25	400

随着科技的进步, 我们保留更改的权利 All right is reserved for amendment with improvement of technology

● L(P)GZ-F立式刮刀下卸料离心机外形配管图 Outline Drawing And Tubing View of L(P)GZ-F Vertical Scraper Down Discharge Entrifuge



型号 Model	代号 Model	A	B	C	E	F	G	H0	H1	H2	H3	H4	H5	D0	D1	D2	D3	D4
L(P)GZ-F800		2380	1400	1000	1850	825	170	2310	1170	400	130	40	350	640	DN50	DN20	DN80	200
L(P)GZ-F1000		2480	1500	1100	1900	1000	180	2350	1280	400	120	50	500	800	DN50	DN20	DN100	250
L(P)GZ-F1200		2558	1800	1200	1950	1103	200	2710	1448	400	100	30	500	860	DN50	DN20	DN125	300
L(P)GZ-F1250		2658	1800	1200	1950	1103	200	2710	1550	400	100	30	500	860	DN50	DN20	DN125	300

随着科技的进步, 我们保留更改的权利 All right is reserved for amendment with improvement of technology